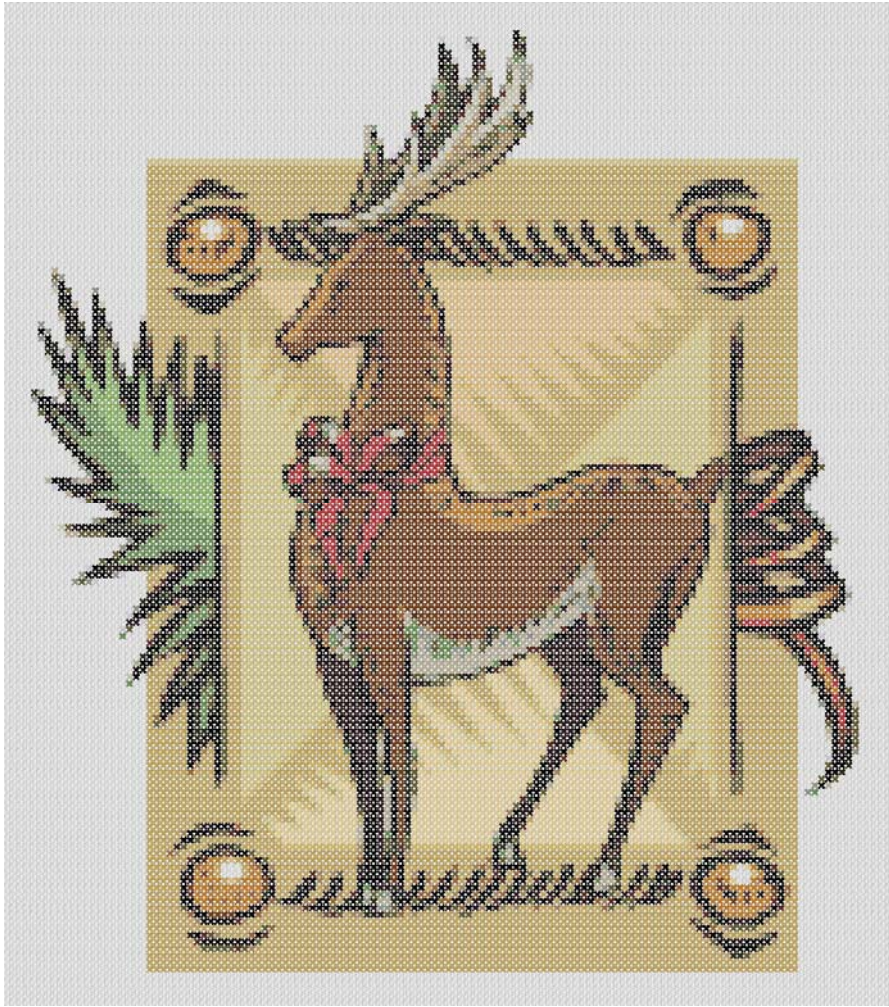


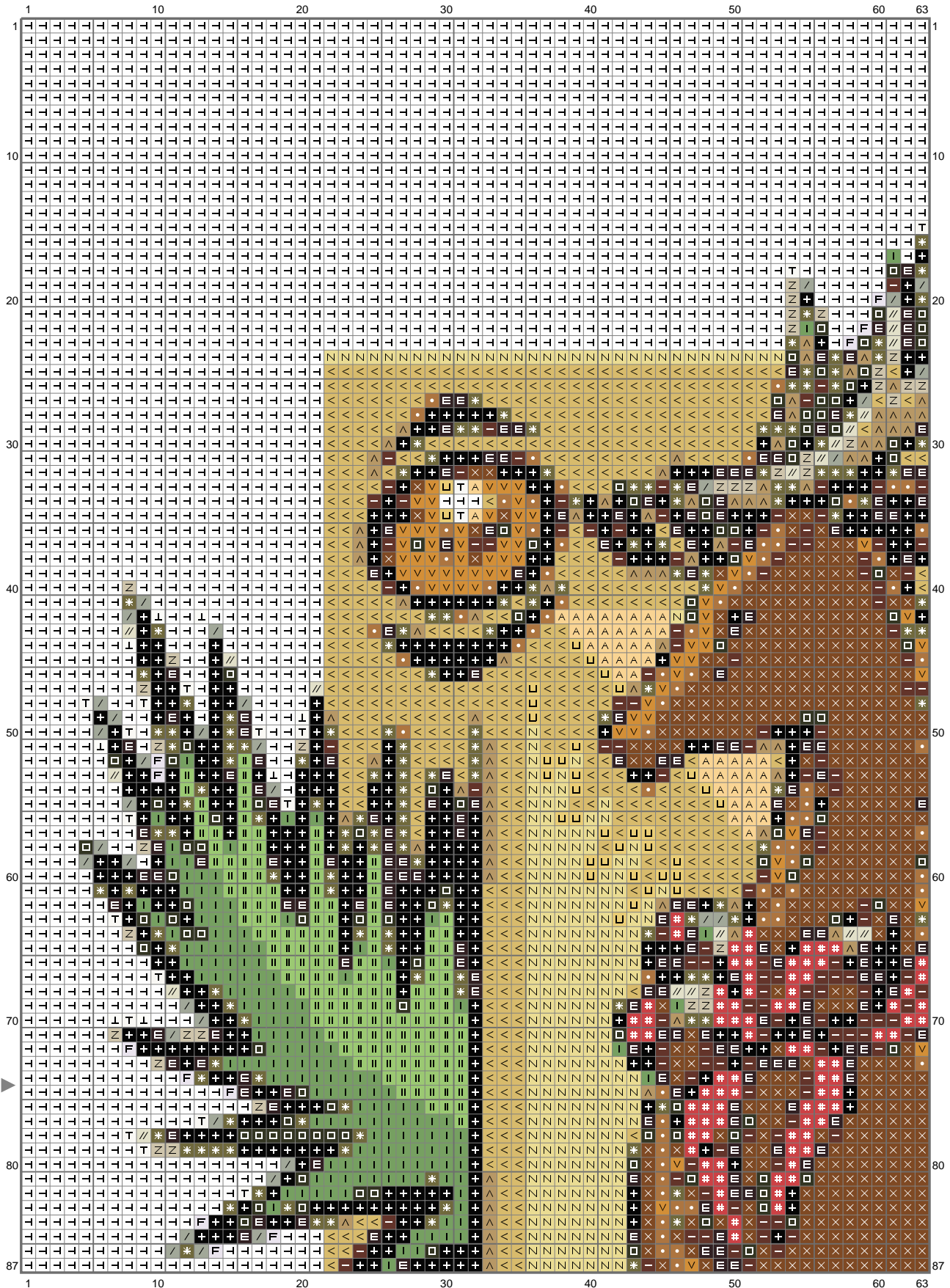
# Reindeer

Copyright (C) 2011 AltogetherChristmas.com



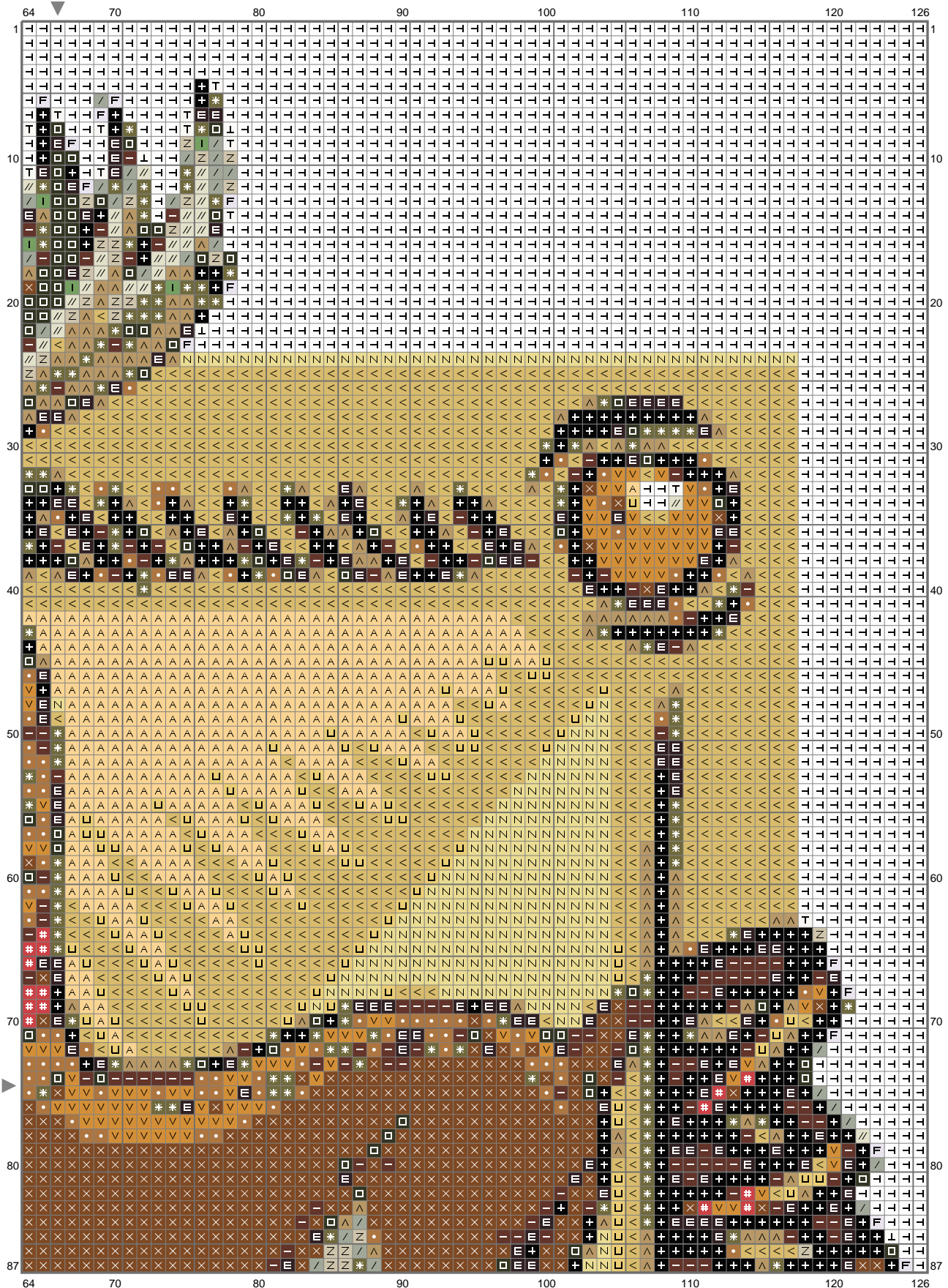
# Reindeer

Copyright (C) 2011 AltogetherChristmas.com



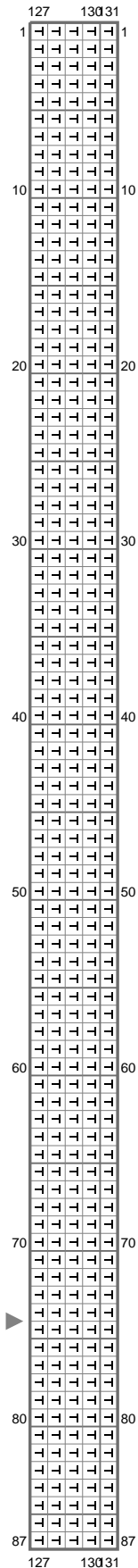
# Reindeer

Copyright (C) 2011 AltogetherChristmas.com



# Reindeer

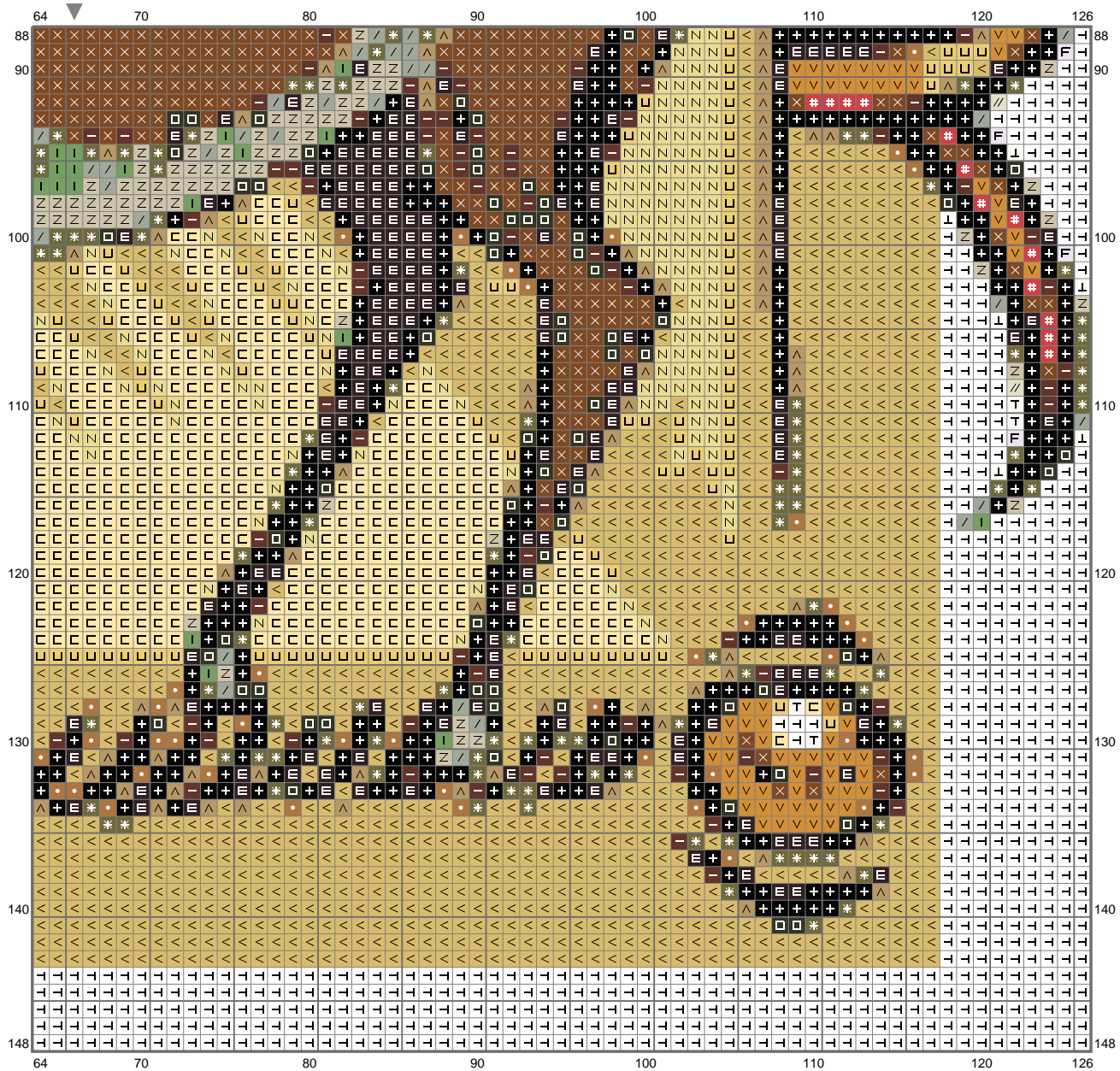
Copyright (C) 2011 AltogetherChristmas.com





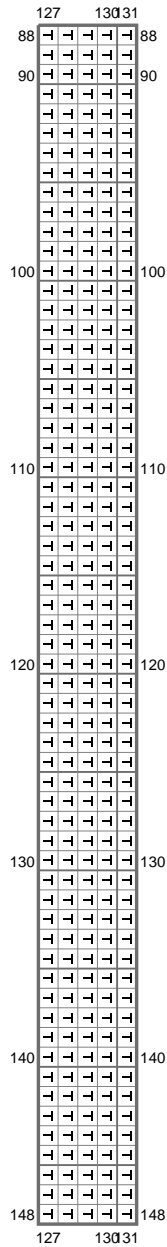
# Reindeer

Copyright (C) 2011 AltogetherChristmas.com



# Reindeer

Copyright (C) 2011 AltogetherChristmas.com



Stitch Count: 131w x 148h  
 Finished Size: 23.76 cm x 26.85 cm (28 ct./inch)  
 Cloth: Aida  
 Cloth's Color: White  
 # of colors: 24 Colors

## Color Table (DMC)

### Cross Stitch

	310	(1473 ct)
	939	(662 ct)
	934	(340 ct)
	938	(393 ct)
	829	(1302 ct)
	3011	(509 ct)
	989	(230 ct)
	347	(113 ct)
	3829	(254 ct)
	783	(297 ct)
	371	(388 ct)
	907	(155 ct)
	833	(3614 ct)
	3822	(321 ct)
	3022	(107 ct)
	524	(171 ct)
	165	(997 ct)
	644	(50 ct)
	3855	(505 ct)
	744	(548 ct)
	762	(32 ct)
	3865	(37 ct)
	BLANC	(24 ct)
	B5200	(6866 ct)